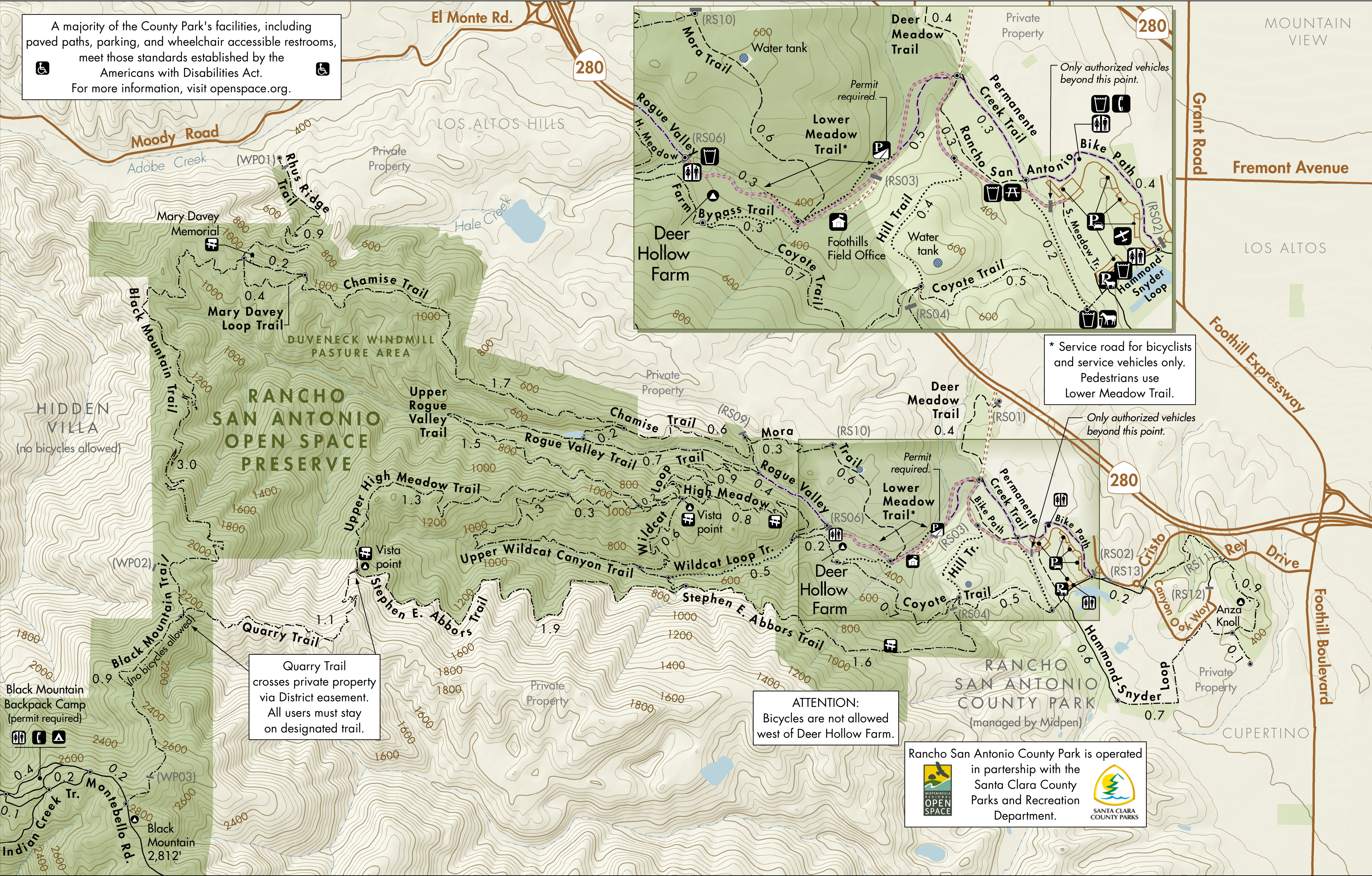


A majority of the County Park's facilities, including paved paths, parking, and wheelchair accessible restrooms, meet those standards established by the Americans with Disabilities Act. For more information, visit openspace.org.



Quarry Trail crosses private property via District easement. All users must stay on designated trail.

ATTENTION: Bicycles are not allowed west of Deer Hollow Farm.

* Service road for bicyclists and service vehicles only. Pedestrians use Lower Meadow Trail.

Only authorized vehicles beyond this point.

Rancho San Antonio County Park is operated in partnership with the Santa Clara County Parks and Recreation Department.



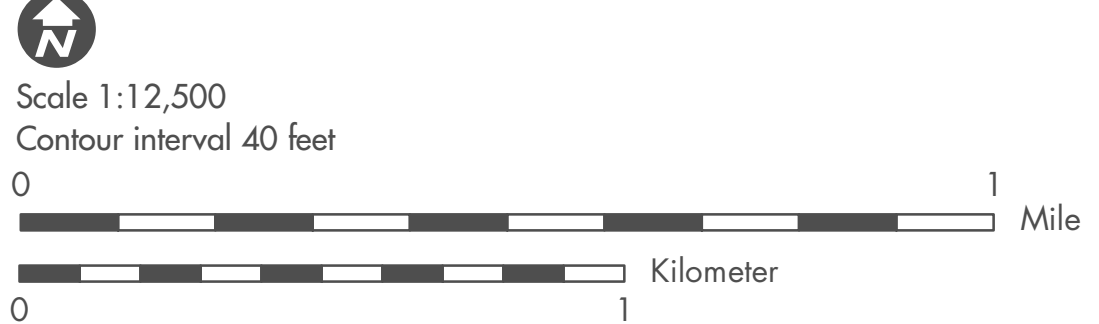
Rancho San Antonio Open Space Preserve

- Midpen preserve
- Other protected land
- Private property (no public access)
- No public entry in Midpen water areas

- Road
- Vehicle driveway
- Hiking-only trail
- Hiking, bicycling trail
- Hiking, equestrian trail
- Hiking, bicycling, equestrian trail
- Easy-access trail

- 0.3 Trail distance (miles)
- Gate (#)
- Parking area
- Roadside parking
- Equestrian parking area
- Restroom
- Field office

- Point of interest
- Backpack campground (permit required)
- Picnic table
- Bench
- Public phone
- Model aircraft field
- Drinking water
- Water tank
- Water trough (nonpotable)



Dogs not permitted in this preserve.

In case of emergency, call 24-hour emergency dispatch at 650-968-4411 or 911.

For your safety and the protection of the preserves:

The preserve is open one-half hour before official sunrise until one-half hour after official sunset.

Leave no trace: do not disturb natural features, plants or animals.

Keep it **crumb clean:** do not leave food or litter behind.

Take valuables with you and lock your vehicle.

For more information visit openspace.org or call 650-691-1200.